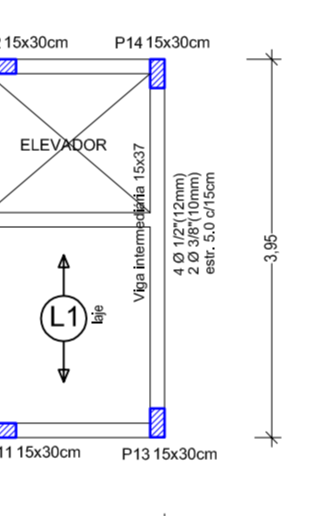
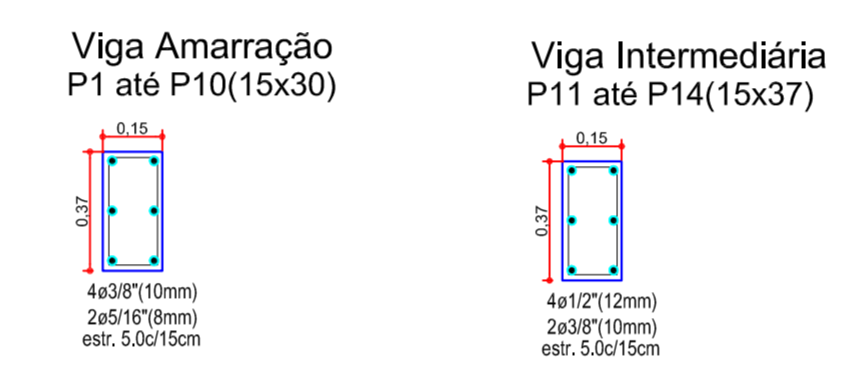
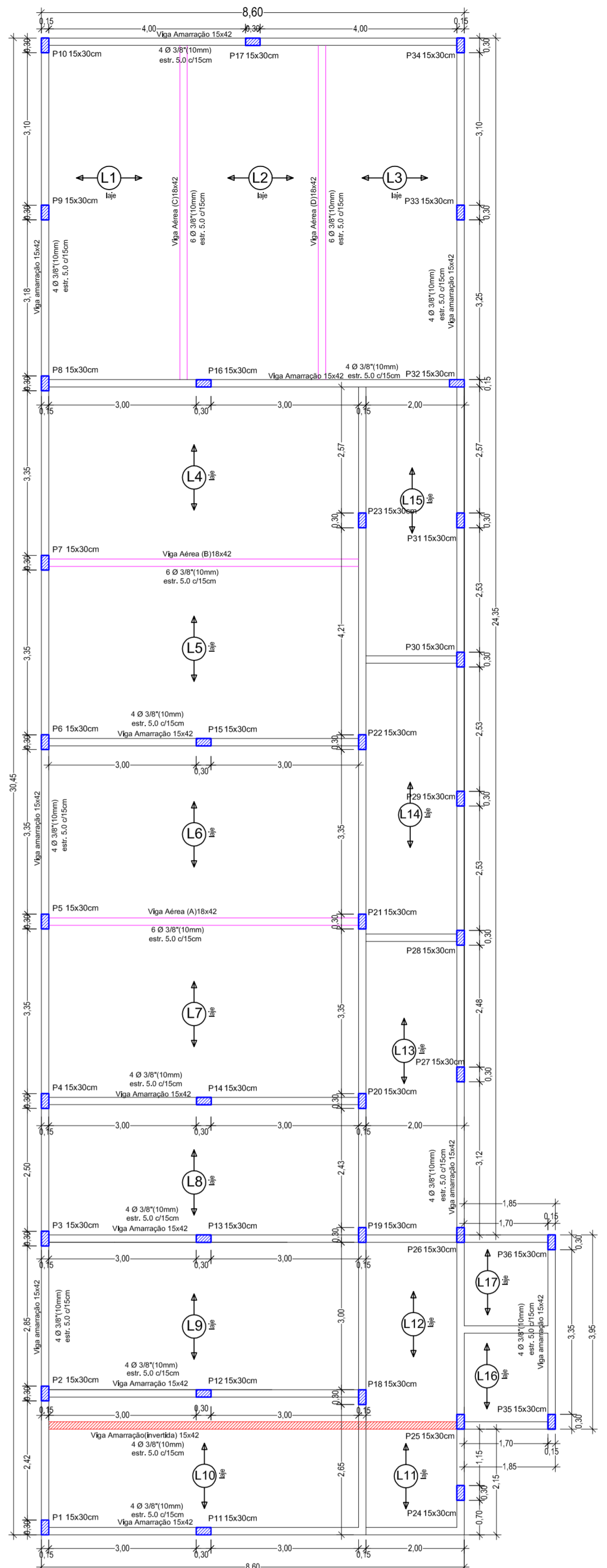
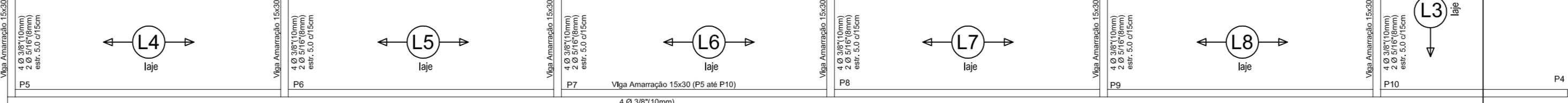


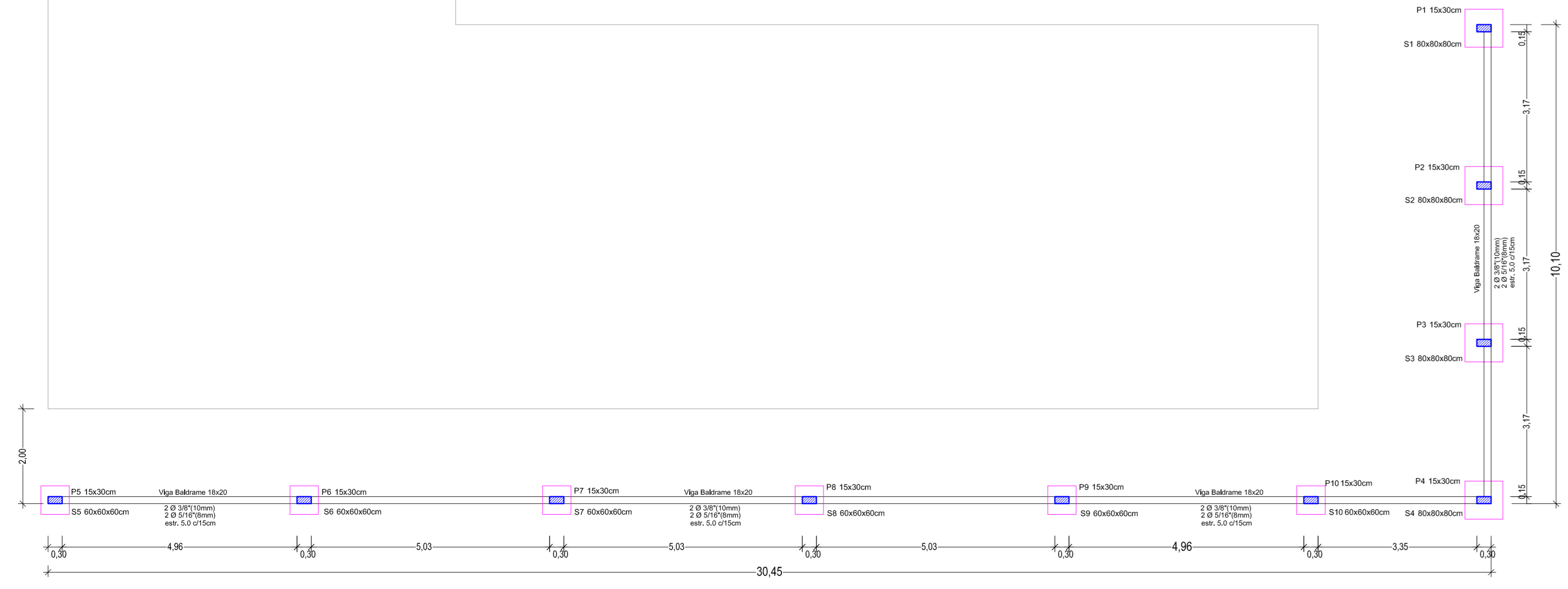
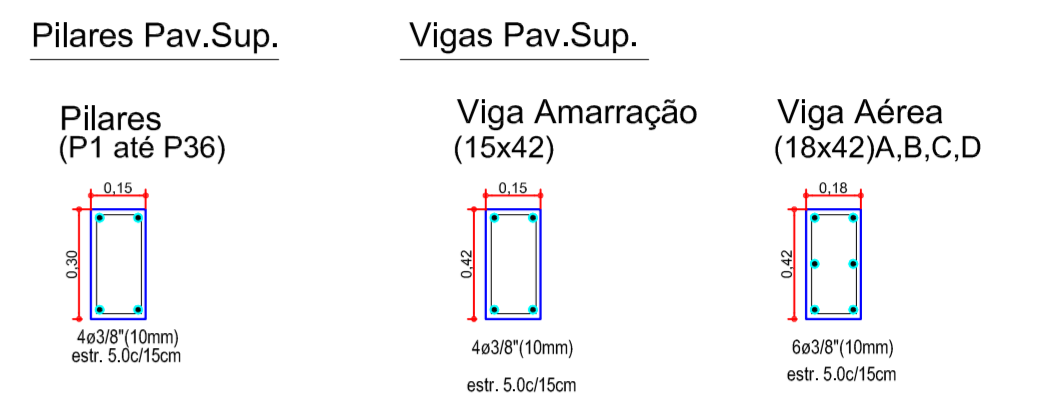
**TÉRREO**  
Fundações, pilares  
Vigas baldrame



**TÉRREO**  
Laje de forro, entrepiso  
e viga amarração



**PAV. SUPERIOR**  
Laje entrepiso



AV. SANTOS DUMONT, 75 - CENTRO - CEP 98.600-000  
FONE (55) 3522 0421/0422 - TRÊS PASSOS/RS  
email obras@trespassos-rs.com.br http www.trespassos-rs.com.br



OBJETO: AMPLIAÇÃO DE PRÉDIO ESCOLAR PÓLO UNIVERSITÁRIO FEDERAL UAB-PÓLO TRÊS PASSOS		
LOCAL: RUA CIPRIANO BARATA, 239	BARRIO-MUNICÍPIO: BAIRRO SANTA INÊS - TRÊS PASSOS-RS	ÁREA AMP: 350,28m²
DESCRIÇÃO: ESTRUTURAL TÉRREO E PAV. SUPERIOR	ESCALA: 1/75	FOLHA: A1

RESP. TEC.: ENG. CIVIL JANEIRA BOURGEOIS DE SOUZA	PREF. MUN.: PREF. MUN. AMORIM	DESENHO: DATA: NOV/2021	Prancha: 02/09
---	-------------------------------	-------------------------	----------------