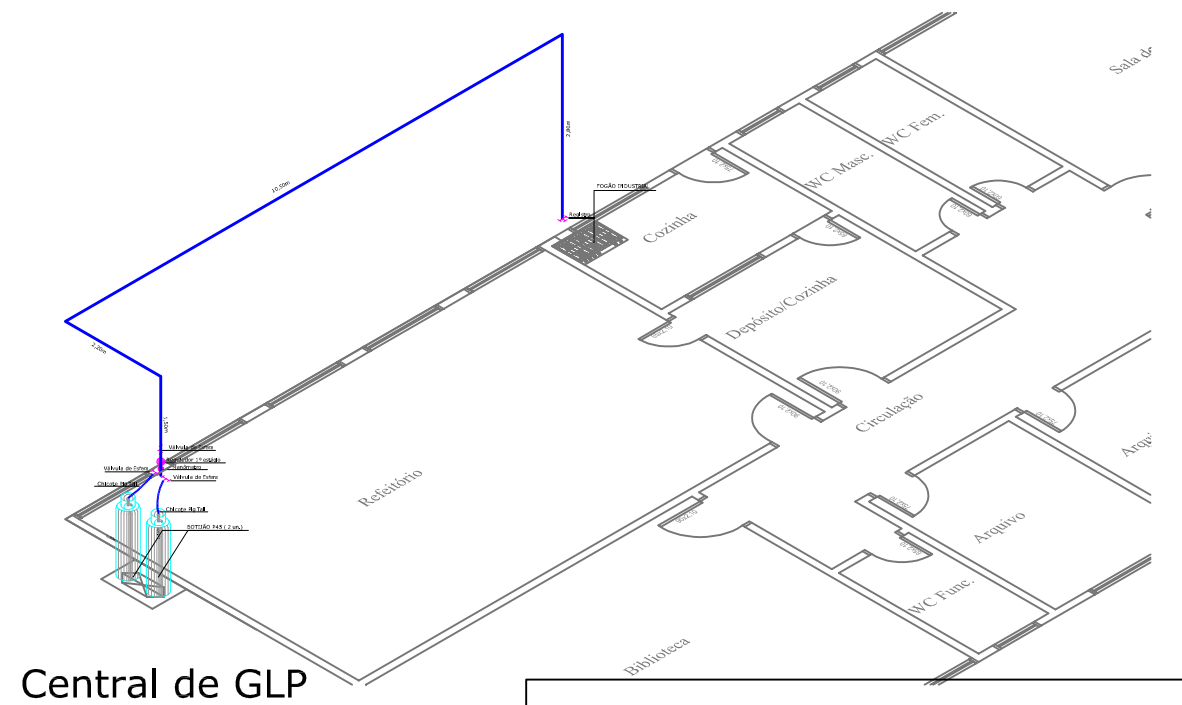
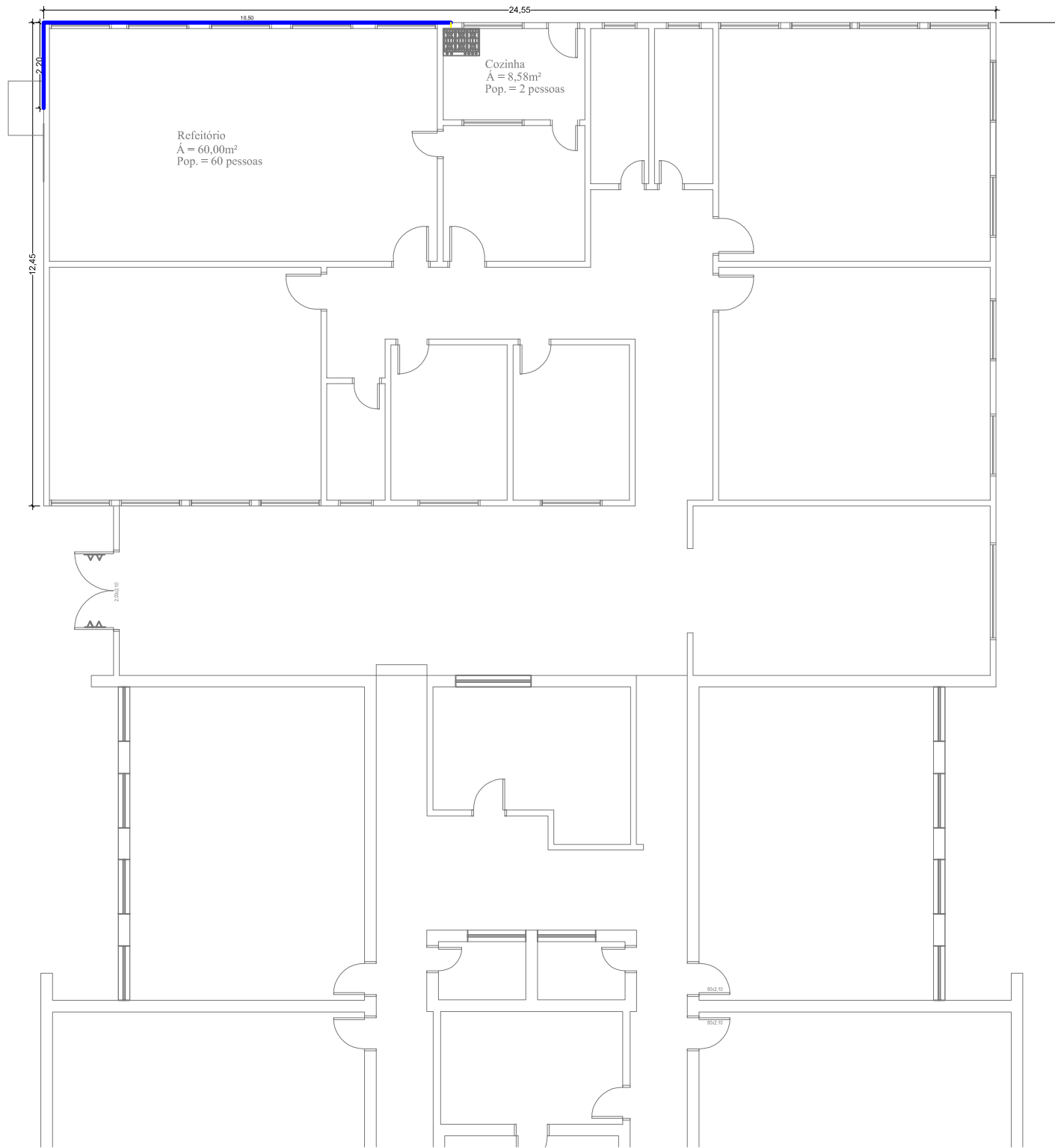
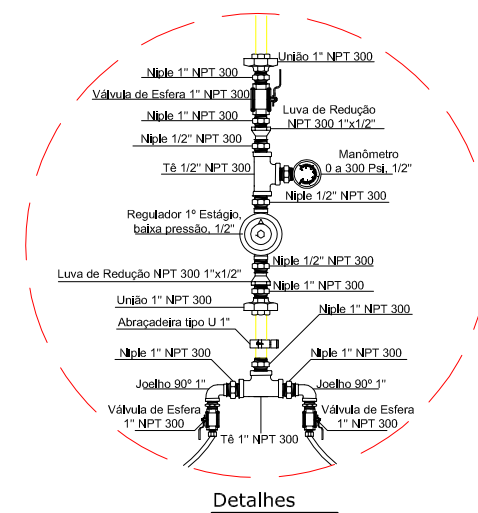
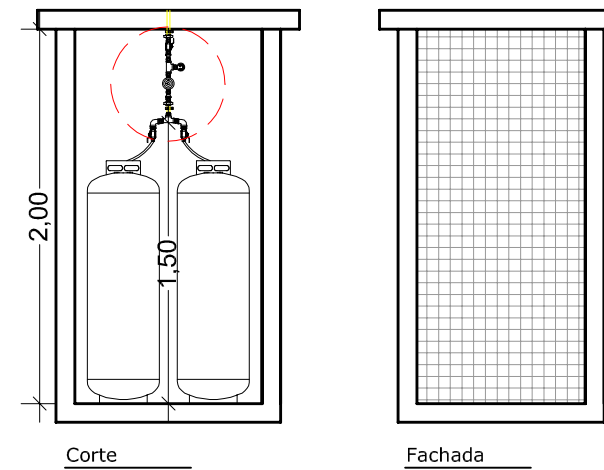


CENTRAL GLP



Central de GLP



AV. SANTOS DUMONT, 75 - CENTRO - CEP 98.600-000
FONE (55) 3522 0421/0422 - TRÊS PASSOS/RS
email obras@trespassos-rs.com.br http www.trespassos-rs.com.br

PREFEITURA MUNICIPAL
TRÊS PASSOS - RS
SMOV-SECRETARIA MUNICIPAL DE OBRAS E VIAÇÃO

OBRA: PPCI - E.M.E.F. JOSÉ DE ANCHIETA		
LOCAL: RUA PARANÁ, 70	BAIRRO/MUNICÍPIO: BELA VISTA - TRÊS PASSOS - RS	TOTAL: 795,56m²
DESCRIÇÃO: CENTRAL DE GLP PLANTA BAIXA E DETALHES		ESCALA: 1/75
RESP. TEC.: ENG. CIVIL CAMILA MERTZ SOUSA - 214170	PREF. MUN.:	DESENHO: Camila DATA: JUL/2021
		PRANCHAS: U