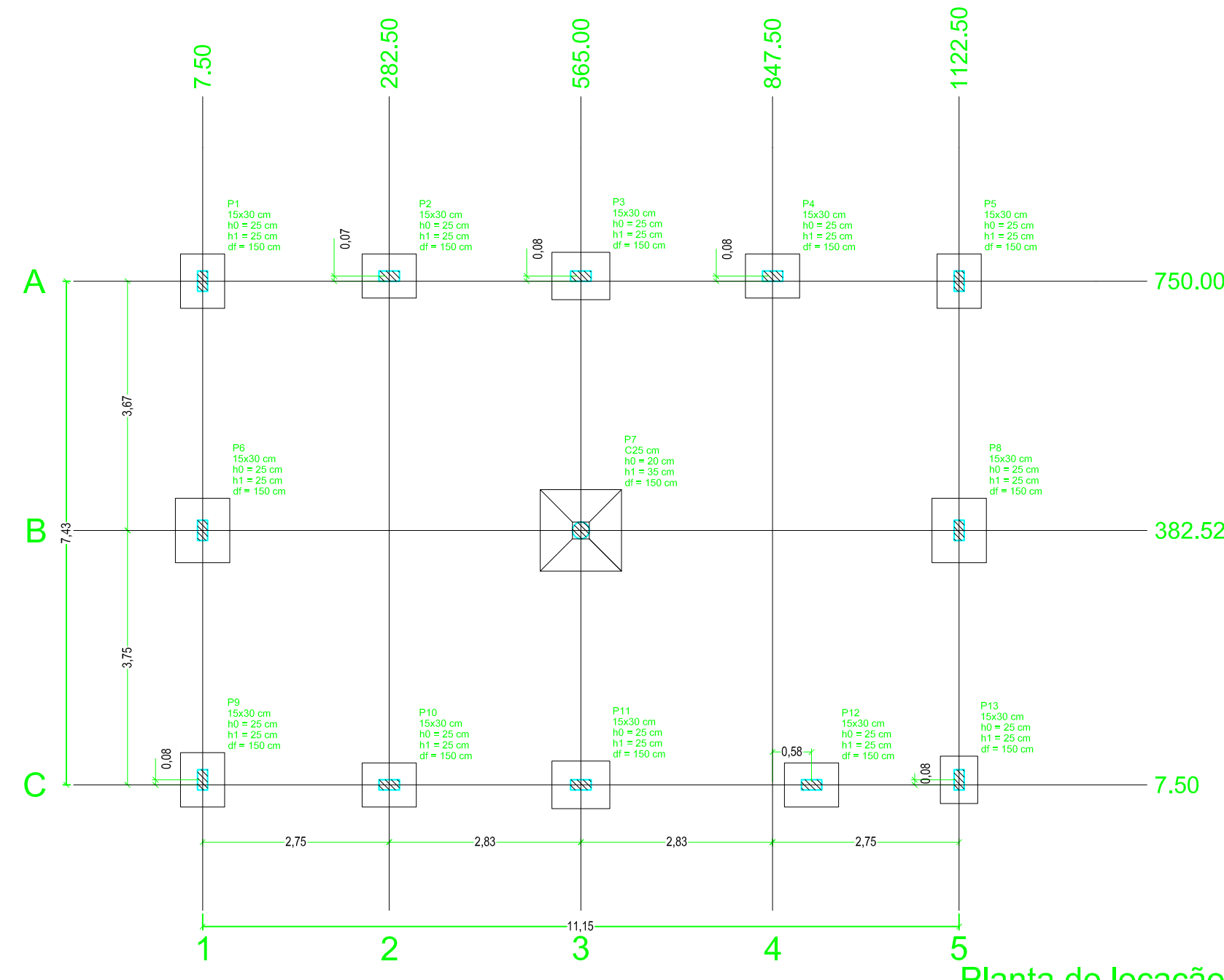
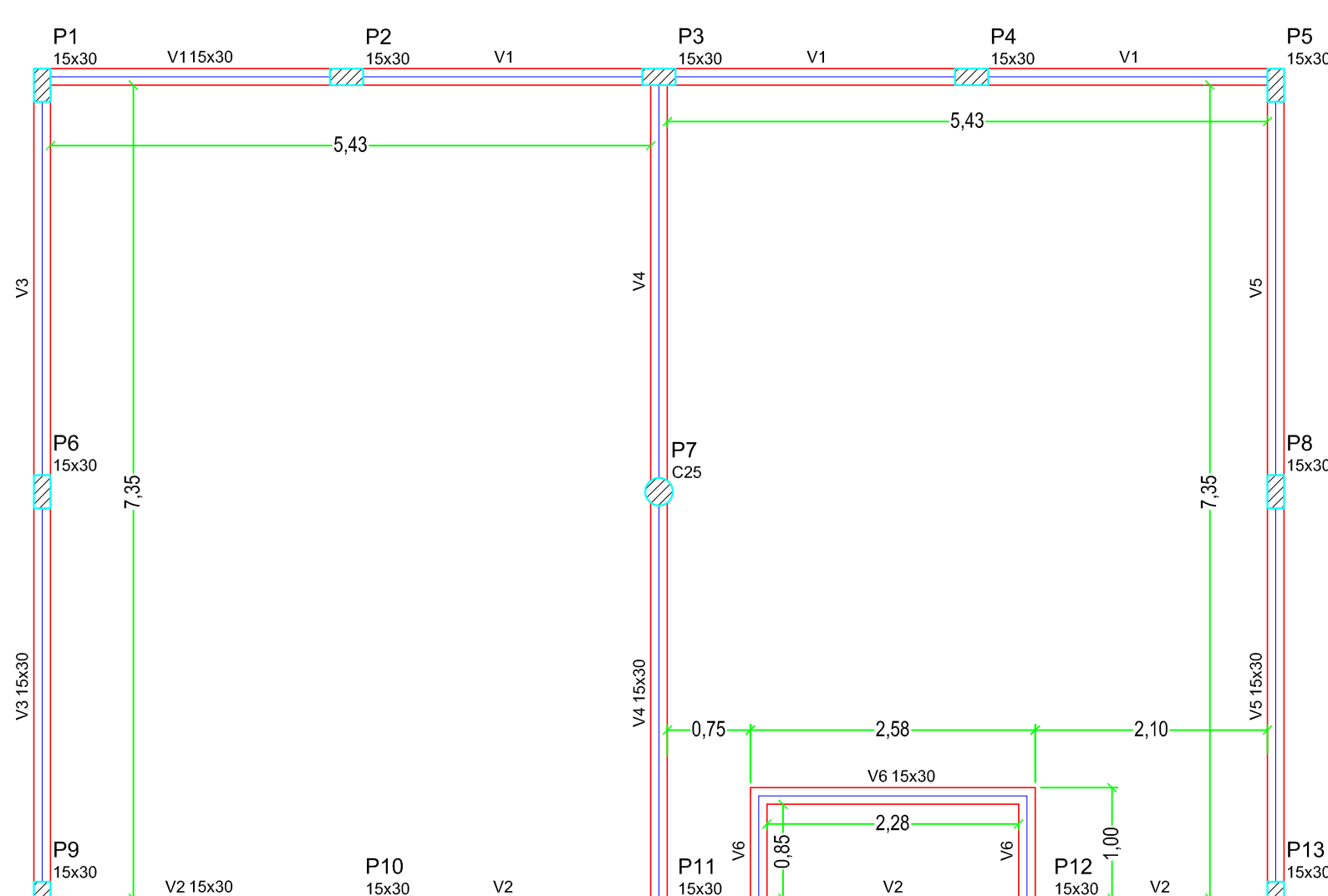
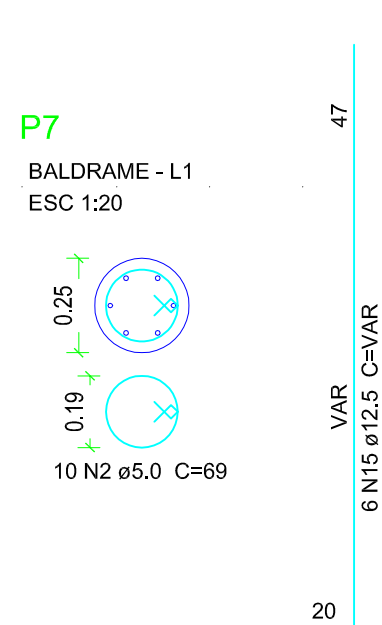
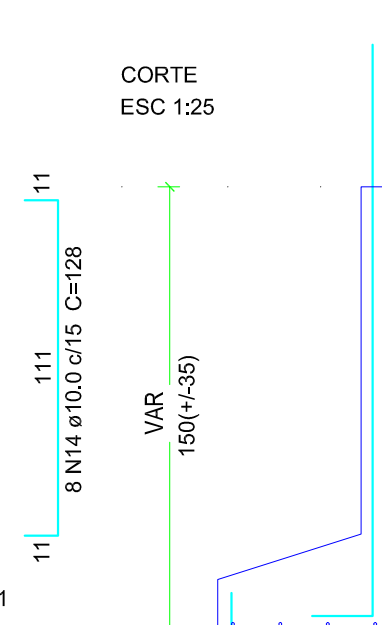
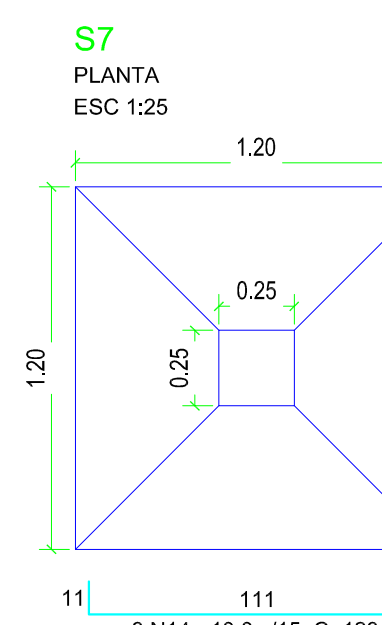
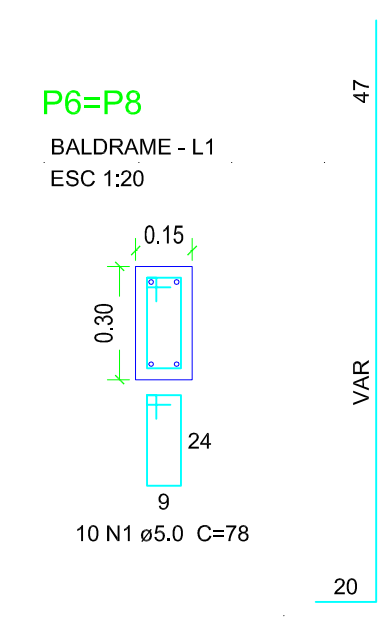
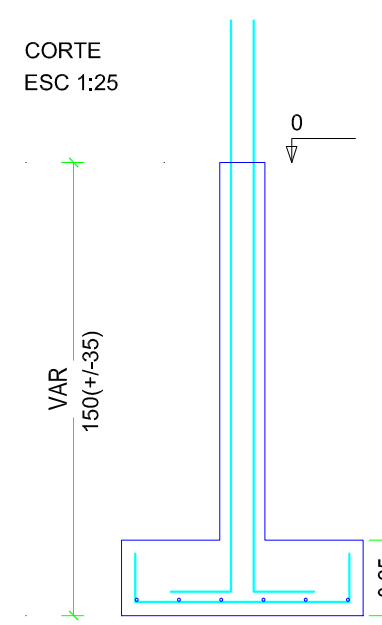
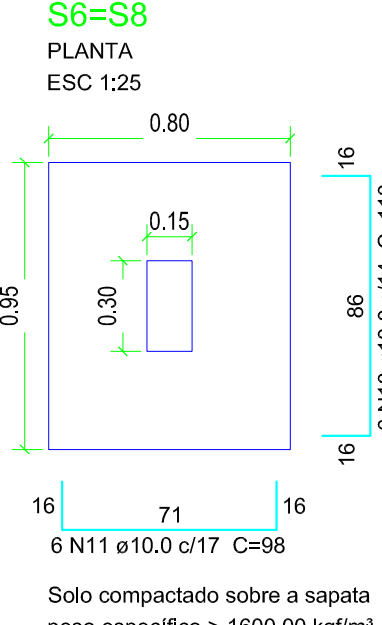
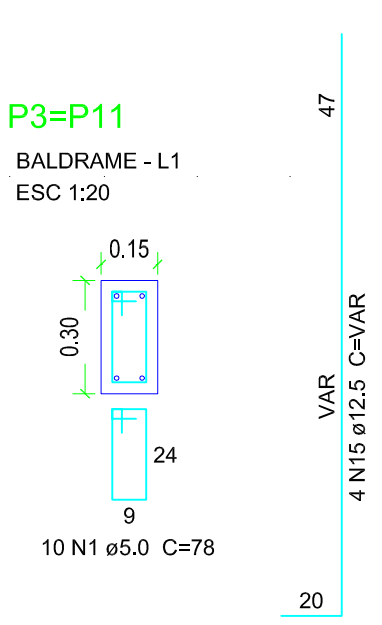
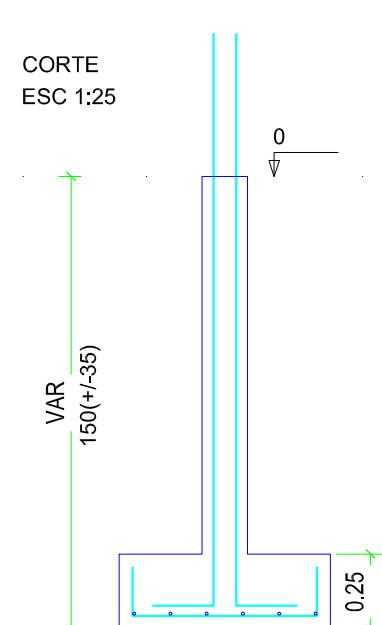
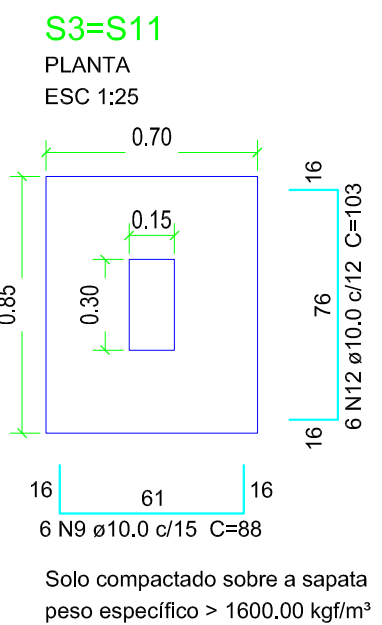
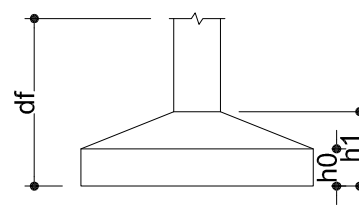


LOCAÇÃO

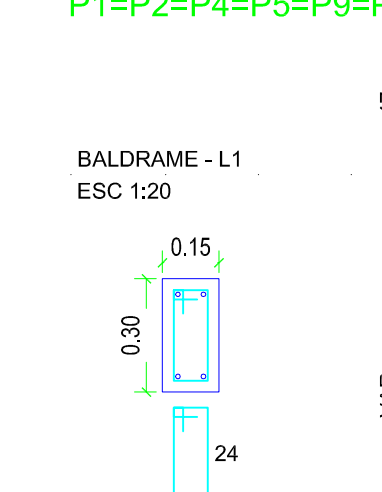
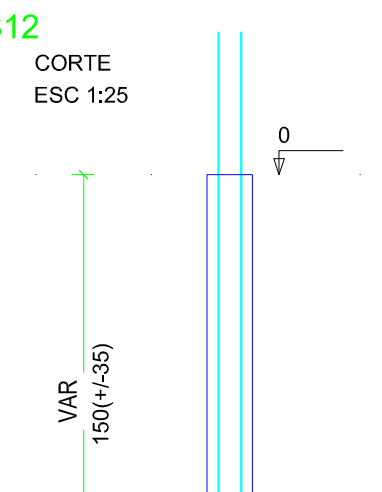
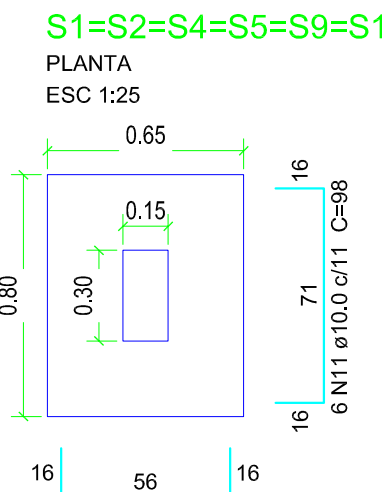
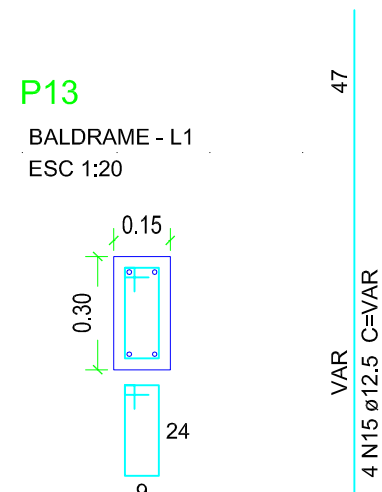
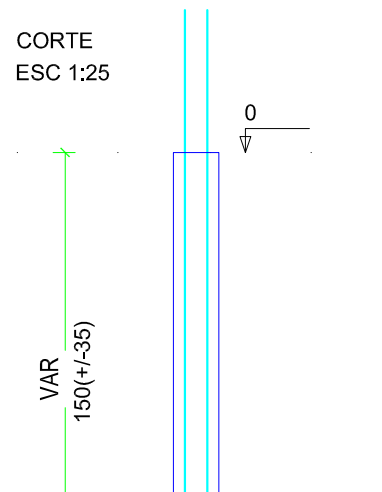
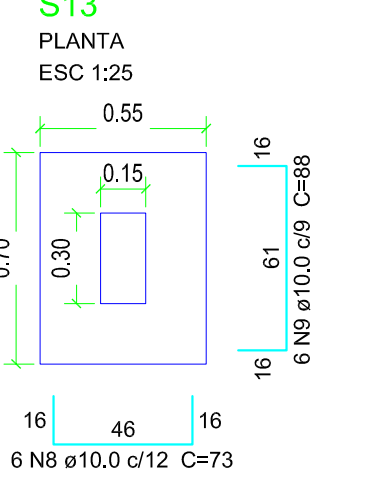
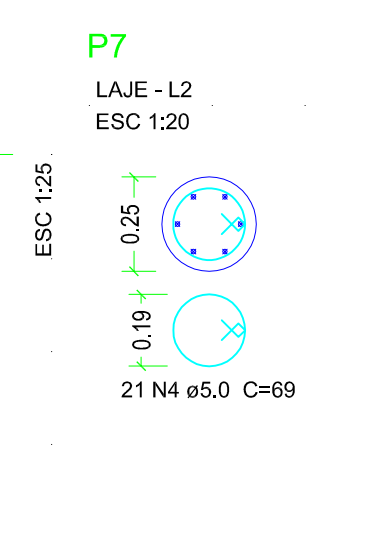
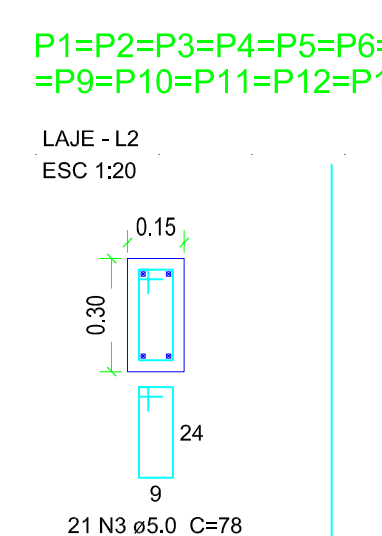


Nome	Seção (cm)	X (cm)	Y (cm)	Carga Máx. (kg)	Carga Méd. (kg)	Compr. (cm)	Área (cm²)	Vol. (m³)	Peso (kg)
P1	15x30	750	750	4,8	3,4	69	80	150	150
P2	15x30	282,50	750	4,8	3,4	69	80	150	150
P3	15x30	565,00	750	4,8	3,4	69	80	150	150
P4	15x30	847,50	750	4,8	3,4	69	80	150	150
P5	15x30	1122,50	750	4,8	3,4	69	80	150	150
P6	15x30	750	382,50	4,8	3,4	69	80	150	150
P7	15x30	282,50	382,50	4,8	3,4	69	80	150	150
P8	15x30	565,00	382,50	4,8	3,4	69	80	150	150
P9	15x30	847,50	382,50	4,8	3,4	69	80	150	150
P10	15x30	1122,50	382,50	4,8	3,4	69	80	150	150
P11	15x30	750	750	4,8	3,4	69	80	150	150
P12	15x30	282,50	750	4,8	3,4	69	80	150	150
P13	15x30	565,00	750	4,8	3,4	69	80	150	150



Nome	Seção (cm)	Elevação (cm)	Nível (cm)
V1	15x30	0	0
V2	15x30	0	0
V3	15x30	0	0
V4	15x30	0	0
V5	15x30	0	0
V6	15x30	0	0

Características dos materiais	
fck (kgf/cm²)	Ecs (kgf/cm³)
250	2500000



Relação do aço

AÇO	N	DIAM (mm)	QUANT	C.UNIT (cm)	C.TOTAL (cm)
CA60	1	5,0	425	79	33150
CA50	2	5,0	10	69	690
CA50	3	10,0	8	1143	9144
CA50	4	10,0	6	759	4554
CA50	5	10,0	4	778	3112
CA50	6	10,0	2	804	1608
CA50	7	10,0	4	452	1808
CA50	8	10,0	6	73	438
CA50	9	10,0	18	86	1554
CA50	10	10,0	42	83	3486
CA50	11	10,0	54	98	5292
CA50	12	10,0	12	103	1236
CA50	13	10,0	12	113	1356
CA50	14	10,0	16	128	2048
CA50	15	12,5	54	VAR	VAR

Resumo do aço

AÇO	DIAM (mm)	C.TOTAL (m)	QUANT + 10% (Barras)	PESO + 10% (kg)
CA50	10,0	356,7	33	241,9
CA60	5,0	113,4	11	120,2
CA60	5,0	338,4	-	57,4

PESO TOTAL (kg)

CA50	362,1
CA60	57,4

Volume de concreto (C-25) = 5,2 m³
Área de forma = 64,93 m²

RESUMO DO AÇO-Vigas Infra Estrutura

Apo	Dilatação	Comp. Total (m)	Quant.+10% (Barras)	Peso +10% (kg)
CA50	10,0	202,3	19	137,2
CA60	5,0	234,8	22	39,8

Peso total (kg)	Vol.concreto total (m³)	Área forma total (m²)		
CA50	137,2	2,3	37,59	
CA60	39,8	C-25	2,3	37,59

RESUMO DO AÇO-Pilares Infra Estrutura

Apo	Dilatação	Comp. Total (m)	Quant.+10% (Barras)	Peso +10% (kg)
CA50	12,5	113,4	11	120,2
CA60	5,0	100,1	10	17,0

Peso total (kg)	Vol.concreto total (m³)	Área forma total (m²)		
CA50	120,2	C-25	0,9	17,38
CA60	17,0	C-25	0,9	17,38

RESUMO DO AÇO-Sapatas Infra Estrutura

Apo	Dilatação	Comp. Total (m)	Quant.+10% (Barras)	Peso +10% (kg)
CA50	10,0	154,4	15	104,7

Peso total (kg)	Vol.concreto total (m³)	Área forma total (m²)		
CA50	104,7	C-25	2,1	9,96

AV. SANTOS DUMONT, 75 - CENTRO - CEP 98.600-000
FONE (55) 3522 0421/0422 - TRÊS PASSOS/RS
email obras@trespassos-rs.com.br http www.trespassos-rs.com.br

PREFEITURA MUNICIPAL
TRÊS PASSOS - RS
SMOV-SECRETARIA MUNICIPAL DE OBRAS E VIAÇÃO

OBRA: **BLOCO I - SALA MULTIUSO**
Complexo Municipal de Ensino Fundamental Integral Professor José Luiz Rhoden

LOCAL: RUA RUI BARBOSA, 337
MUNICÍPIO: BAIRRO FREI OLÍMPIO- TRÊS PASSOS-RS
ÁREA CONSTRUIDA: 86,44m²

DESCRIÇÃO: ESTRUTURAL
LOCAÇÃO DE PILARES E FORMAS DE VIGAS BALDRAME
ESCALA: indicada
FOLHA: A1

RESP. TEC.:
ENG. CIVIL JANETE H. BOURSCHIED-101.919 D

PREF. MUN.:
DESENHO: Amorim
DATA: FEV/2021

EST: 01103