

Forma do pavimento LAJE (Nível 315)  
escala 1:50

Vigas				
Nome	Seção (cm)	Elevação (cm)	Nível (cm)	
V1	15x45	0	315	
V2	15x50	0	315	
V3	15x50	0	315	
V4	15x45	0	315	
V5	15x45	0	315	
V6	15x45	0	315	
V7	15x45	0	315	

RESUMO DO AÇO-Vigas Supra Estrutura

Aço	Diâmetro	Comp. Total (m)	Quant.+10% (Barras)	Peso +10% (Kg)
CA50	6.3	4.0	1	1.1
	10.0	218.1	20	147.9
	12.5	50.8	5	53.8
CA60	5.0	239.6	22	40.6

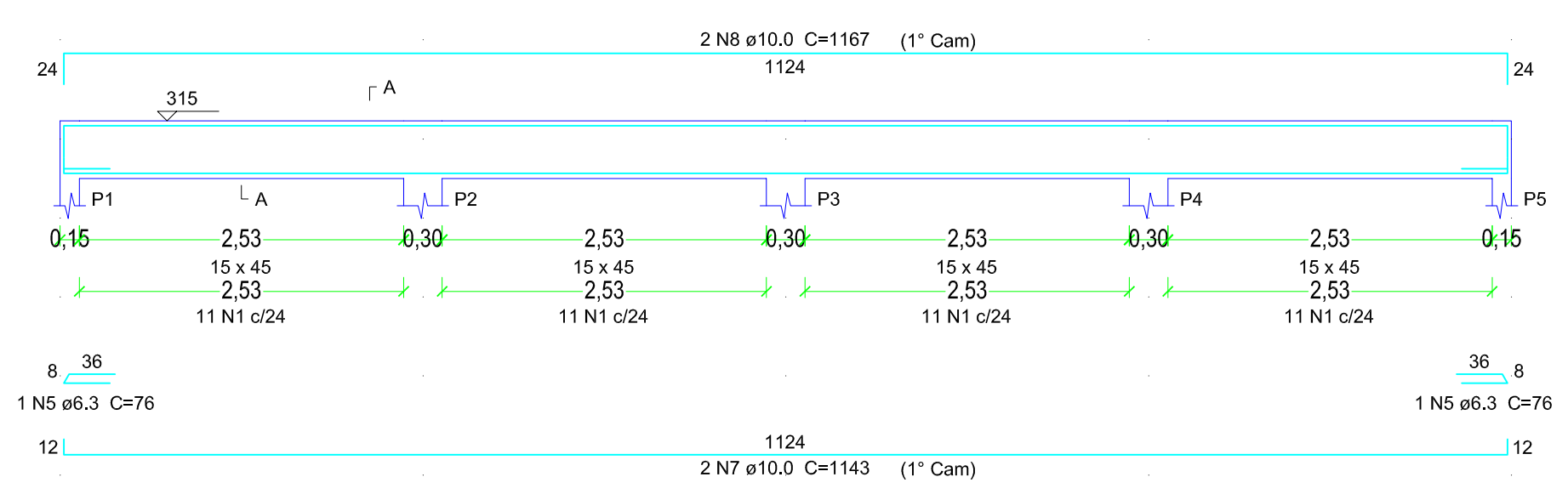
Peso total (Kg)		Vol.concreto total (m³)		Área forma total (m²)	
CA50	202.8	C-25	3.9	61.11	
CA60	40.6				

RESUMO DO AÇO-Pilares Supra Estrutura

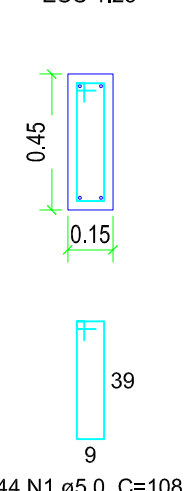
Aço	Diâmetro	Comp. Total (m)	Quant.+10% (Barras)	Peso +10% (Kg)
CA50	12.5	168.5	16	178.5
CA60	5.0	210.2	20	35.6

Peso total (Kg)		Vol.concreto total (m³)		Área forma total (m²)	
CA50	178.5	C-25	1.9	36.49	
CA60	35.6				

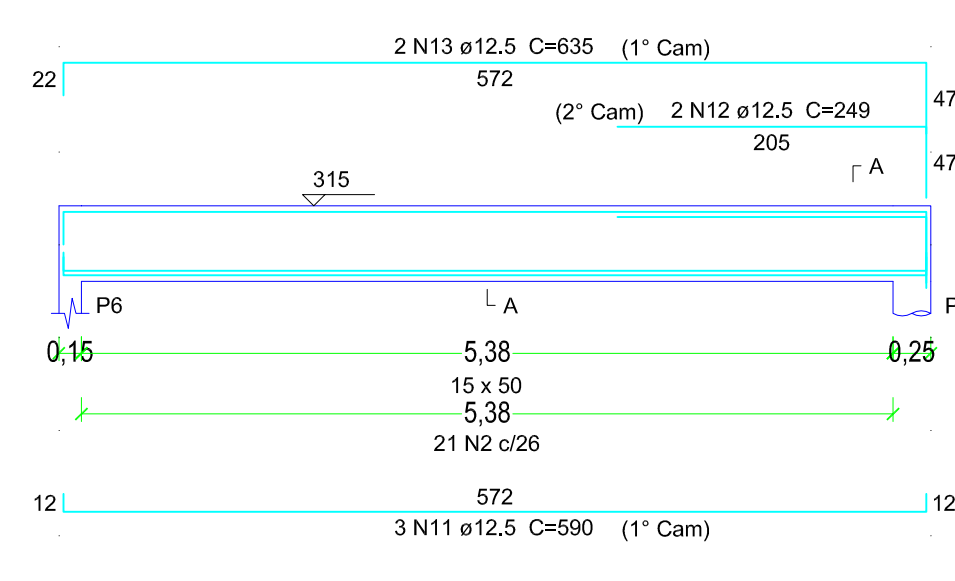
V1 (15 x 45)  
ESC 1:50



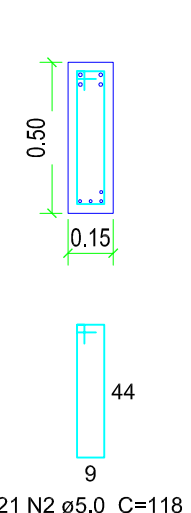
SEÇÃO A-A  
ESC 1:25



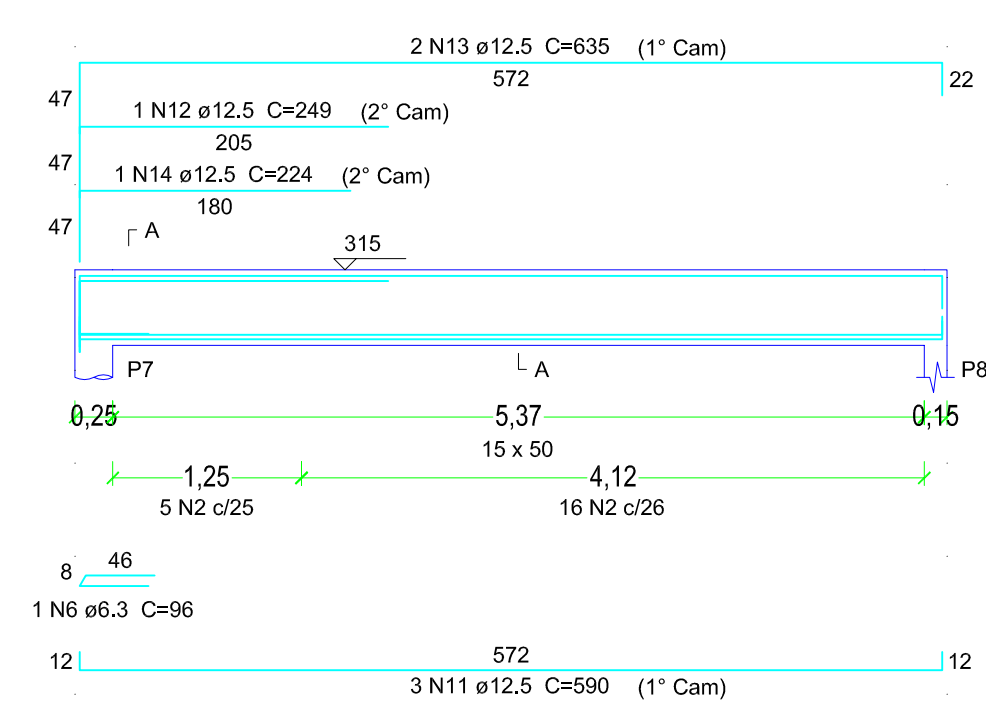
V2 (15 x 50)  
ESC 1:50



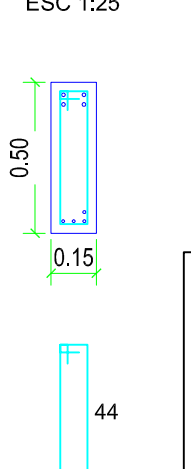
SEÇÃO A-A  
ESC 1:25



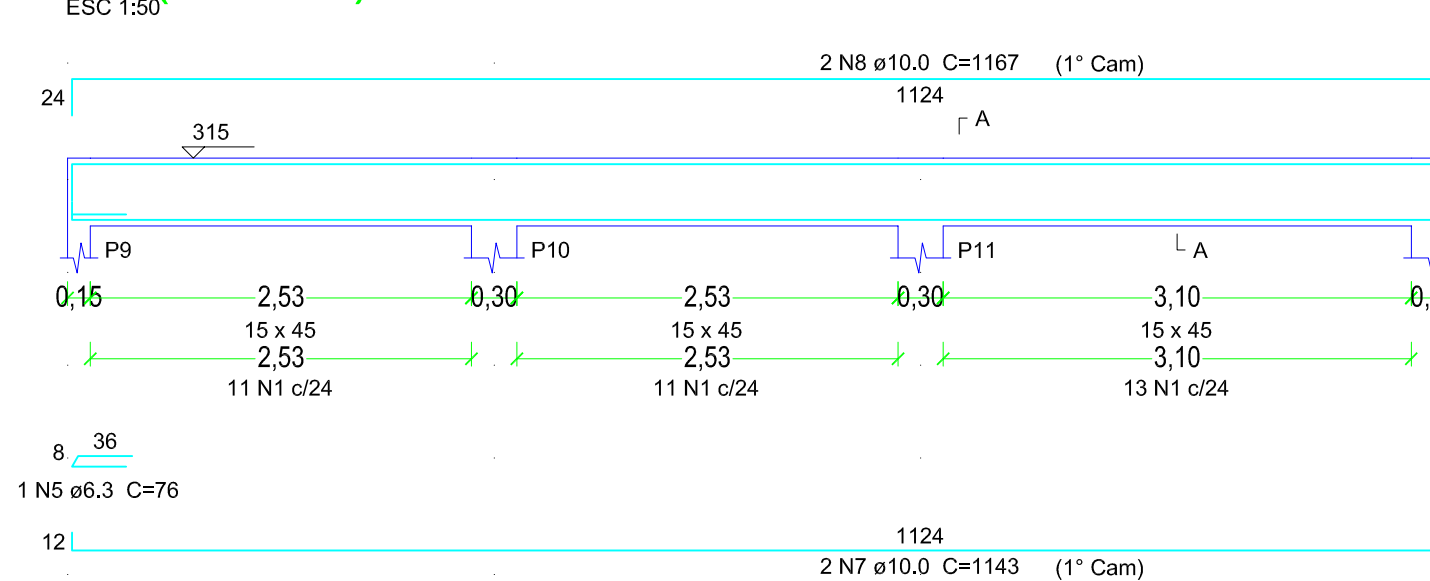
V3 (15 x 50)  
ESC 1:50



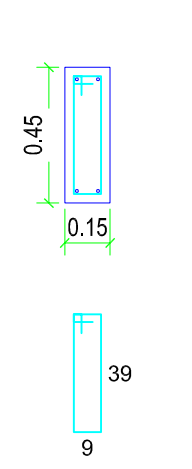
SEÇÃO A-A  
ESC 1:25



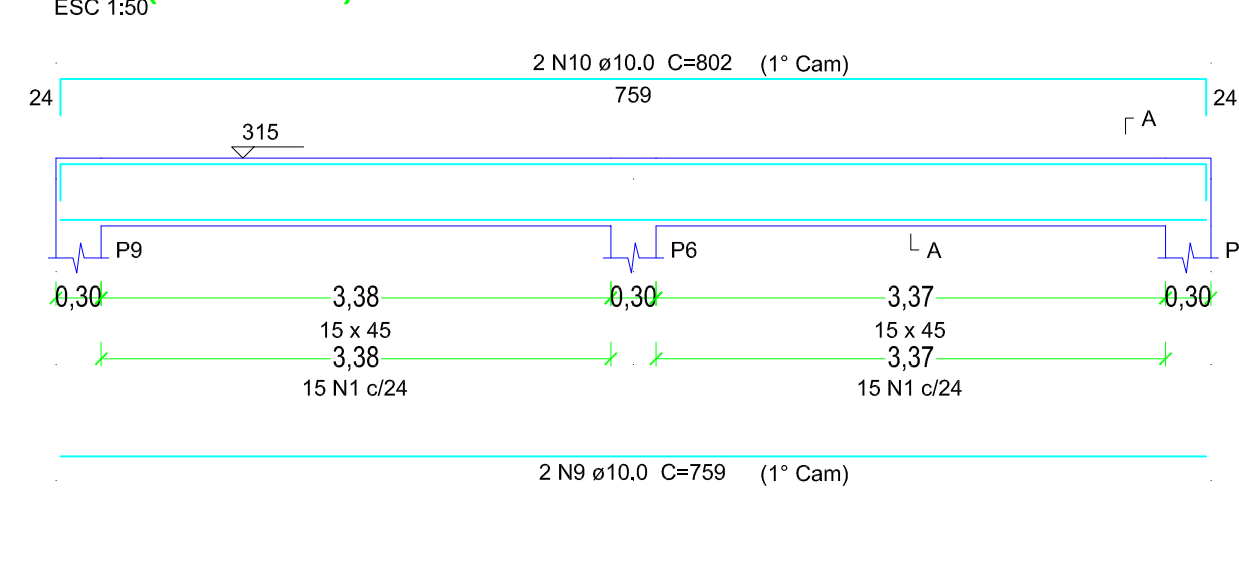
V4 (15 x 45)  
ESC 1:50



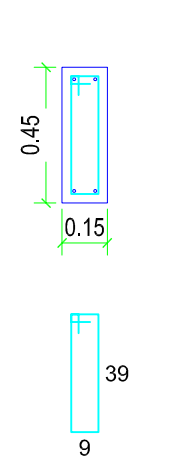
SEÇÃO A-A  
ESC 1:25



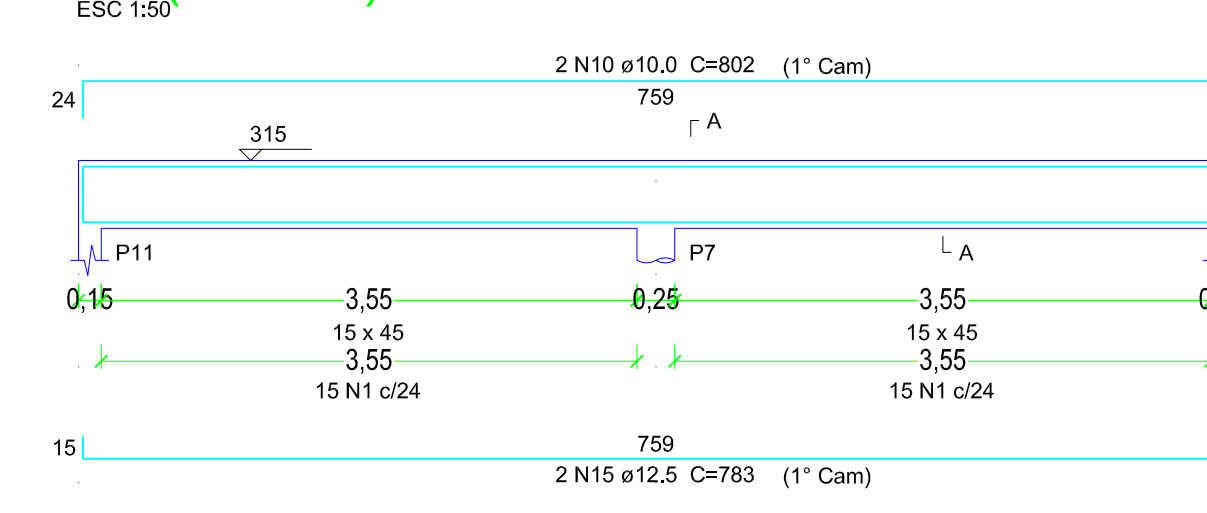
V5 (15 x 45)  
ESC 1:50



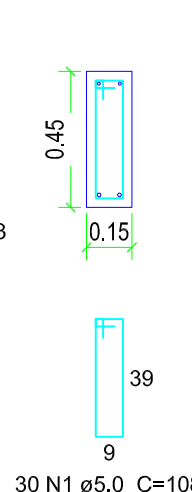
SEÇÃO A-A  
ESC 1:25



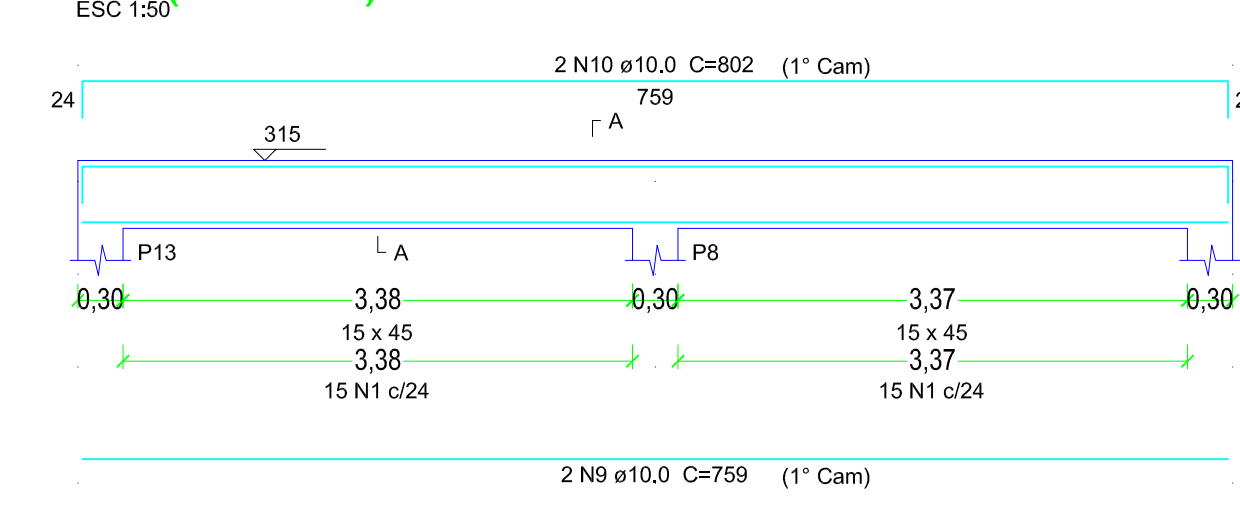
V6 (15 x 45)  
ESC 1:50



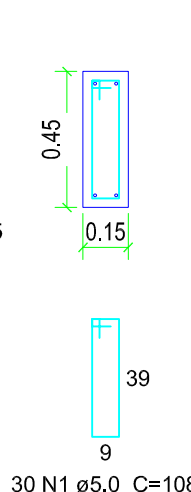
SEÇÃO A-A  
ESC 1:25



V7 (15 x 45)  
ESC 1:50



SEÇÃO A-A  
ESC 1:25



AV. SANTOS DUMONT, 75 - CENTRO - CEP 98.600-000  
FONE (55) 3522 0421/0422 - TRÊS PASSOS/RS  
email obras@trespassos-rs.com.br http www.trespassos-rs.com.br

**PREFEITURA MUNICIPAL**  
**TRÊS PASSOS - RS**  
SMOV-SECRETARIA MUNICIPAL DE OBRAS E VIAÇÃO

OBRA: **BLOCO I - SALA MULTIUSO**  
Complexo Municipal de Ensino Fundamental Integral Professor José Luiz Rhoden

LOCAL: RUA RUI BARBOSA, 337    MUNICÍPIO: BAIRRO FREI OLÍMPIO- TRÊS PASSOS-RS    ÁREA CONSTRUIDA: 86,44m²

DESCRIÇÃO: **ESTRUTURAL**  
FORMA E DETALHE DAS VIGAS, LAJE DE COBERTURA    ESCALA: indicada    FOLHA: A1

RESP. TEC.:    PREF. MUN.:    DESENHO: *Amorim*    EST: **02/03**  
ENG. CIVIL JANETE H. BOURSCHIED-101.919/D    DATA: **FEV/2021**